

5 	Document Type: Technical data sheet [page 1 of 3]	-
Product Code: SEED-EYE	Product Name: SEED-EYE	Current version & Author: v1 (22.02.2013) - Shiva

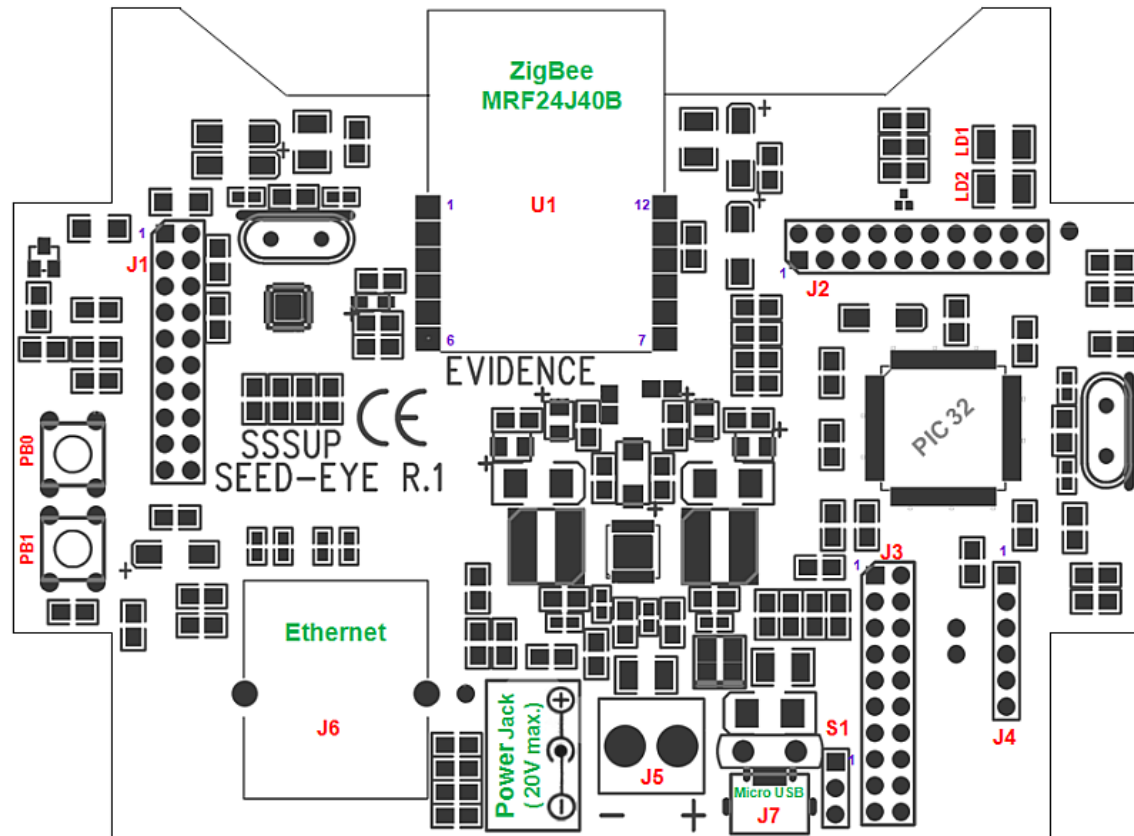


Figure 1: SEED EYE

Power Supply Connector [J5]	
Pin 1	Input voltage to pin 1 on Jumper S1
Pin 2	GND

Note1: Input 20V DC max.

Note2: Connect either 'J5' or 'Power Jack'. NEVER connect both!

Jumper	pos. 1-2	pos. 2-3
S1	Power from Power Jack or J5	Power from Pc USB (+5V)

Note: Default jumper settings are indicated with grey background

**ZigBee Connector [U2]**

Pin 1	GND1	Pin 12	GND3
Pin 2	RESET	Pin 11	GND2
Pin 3	WAKE	Pin 10	VIN
Pin 4	INT	Pin 9	-
Pin 5	SDI	Pin 8	CS
Pin 6	SCK	Pin 7	SDO

Micro USB (type B) Connector [J7]

Pin 1	VCC USB
Pin 2	USB_D-
Pin 3	USB_D+
Pin 4	USB_ID
Pin 5	0V USB

ICD Connector [J4]

Pin 1	MCLR
Pin 2	+3.3V
Pin 3	GND
Pin 4	ICD-RB7
Pin 5	ICD-RB6
Pin 6	-

Expansion Connector [J2]

Pin 1	+1.2V	Pin 2	GND
Pin 3	BUS_A0 (TMS/RA0)	Pin 4	CONN_CN0 (ETXCLK/PMD15/CN16/RD7)
Pin 5	BUS_A1 (TCK/RA1)	Pin 6	CONN_CN1 (ETXD3/PMD13/CN19/RD13)
Pin 7	BUS_A2 (SCL2/RA2)	Pin 8	CONN_CN2 (ECOL/SCK2A/U2BTX/U2ARTS/ PMA5/CN8/RG6)
Pin 9	BUS_A3 (SDA2/RA3)	Pin 10	CONN_CN3 (ECRS/SDA2A/SDI2A/U2ARX/ PMA4/CN9/RG7)
Pin 11	BUS_A4 (TDI/RA4)	Pin 12	CONN_GNRC1 (TRD0/RG13)
Pin 13	BUS_A5 (TDO/RA5)	Pin 14	CONN_GNRC1 (T2CK/RC1)
Pin 15	BUS_A6 (TRLCK/RA6)	Pin 16	CONN_GNRC2 (AETXCLK/SCL1/ INT3/RA14)
Pin 17	BUS_A7 (TRD3/RA7)	Pin 18	BUS_A9 (VREF+/CVREF+/AERDX3/ PMA6/RA10)
Pin 19	BUS_A8 (VREF+/CVREF+/AERDX2/ PMA7/RA9)	Pin 20	+3.3V

RJ45 Ethernet Connector [J6]

Pin 1	SDO_ETH	Pin 2	SCK_ETH
Pin 3	SDI_ETH	Pin 4	GP1
Pin 5	SS	Pin 6	INT2
Pin 7	CN1	Pin 8	INT1
Pin 9	GND	Pin 10	+3.3V

**Analog Connector (UART/SPI/CAN) [J3]**

Pin 1	GND	Pin 2	+3.3V
Pin 3	AN1 (Analog Input)	Pin 4	SDO1 (SPI)
Pin 5	AN2 (Analog Input)	Pin 6	SDI1 (SPI)
Pin 7	AN3 (Analog Input)	Pin 8	SCK1 (SPI)
Pin 9	AN4 (Analog Input)	Pin 10	/SS1 (SPI)
Pin 11	AN5 (Analog Input)	Pin 12	U1BRX (UART)
Pin 13	AN6 (Analog Input)	Pin 14	U1BTX (UART)
Pin 15	AN7 (Analog Input)	Pin 16	C2TX (CAN)
Pin 17	AN8 (Analog Input)	Pin 18	C2RX (CAN)
Pin 19	Filtered Power Input	Pin 20	GND

LED**ON****OFF**

LD1 (green)	RC3 (Input or output = 0)	RC3 (Output = 1)
LD2 (green)	RC2 (Output = 1)	RC2 (Output = 0)

Camera Connector [J1]

Pin 1	GND	Pin 2	+3.3V
Pin 3	CAM_DATA0 (PMD0/RE0)	Pin 4	CAM_PWD (OC3/RD2)
Pin 5	CAM_DATA1 (PMD1/RE1)	Pin 6	CAM_RST (OC2/RD1)
Pin 7	CAM_DATA2 (PMD2/RE2)	Pin 8	I2C_SCL (SCL1A/SDO1A/U1ATX/RF8)
Pin 9	CAM_DATA3 (PMD3/RE3)	Pin 10	I2C_SDA (SDA1A/SDI1A/U1ARX/RF2)
Pin 11	CAM_DATA4 (PMD4/RE4)	Pin 12	CAM_L_SYNC (INT2/RE9)
Pin 13	CAM_DATA5 (PMD5/RE5)	Pin 14	CAM_H_SYNC (PGED2/AN0/CN2/RB0)
Pin 15	CAM_DATA6 (PMD6/RE6)	Pin 16	CONN_CN4 (OC5/PMWR/CN13/RD4)
Pin 17	CAM_DATA7 (PMD7/RE7)	Pin 18	CAM_MCLK (OC4/RD3)
Pin 19	CAM_PCLK (INT1/RE8)	Pin 20	VBB (V _{EXT} connector J5)